



Botron B89015 Elite On-Demand Basic Tester with Large Turnstile Data Sheet



What's in the box?

- Elite On Demand Basic Tester (tester is not software compatible)
- Large Turnstile (PN: B881140 Replacement Chassis Only Part Number)
- Elite On Demand Basic Footplate (PN: B88120 Replacement Part Number)
- Power Supply (PN: EP0023 Replacement Part Number)
- 1 RJ45 Cables (Footplate Cables)
- 1 Ground Cable for Footplate Grounding



Botron B89015 Elite On-Demand Basic Tester with Large Turnstile Data Sheet

Product Specifications:

- **Made In The USA**
- **CE Certified**
- **Test Range**
 - Wrist Strap: 200k - 100M Ohms
 - Footwear: 200k - 1.5G Ohms
 - 100% Adjustable Test Range
- **Connections**
 - PLC Relay Control
 - RJ45 Footplate
 - Earth Ground (on Footplate)
- **10-Digit Keypad**
- **ESD Device Interface Inputs**
 - 3.5mm Mono Dual Wire Wrist Strap
 - 4mm Banana Type Single Wire Wrist Strap
 - RJ45 Footplate Left & Right Foot
- **Alerts**
 - Audible Alert on Fail
 - Multi-Color LED Indicators
 - Pass - Green
 - Fail - Red
- **Calibration Mode**
 - **Calibration Instructions Link**
 - <https://support.botron.com/how-to/elite-on-demand-esd-test-system-calibration/>
 - Calibration Tolerance
 - 1MΩ, 10%
 - 10MΩ, 10%



Botron B89015 Elite On-Demand Basic Tester with Large Turnstile Data Sheet

- 100M Ω , 15%
- 1000M Ω , 20%
- **Relays**
 - **Relays provide connection to gated terminals such as doors and light towers.**
 - There are two relays, A & B, at the bottom of the ELITE ESD Tester. Each relay has 3 inputs; Normally Open (NO), Common (C), and Normally Closed (NC). How you wire to your ELITE depends on the type of switch on your external device. Once you have determined the type of switch, follow the illustration for the connection procedure.
 - Relay A is triggered on an entry event (passing test result), acting as a switch to control outside gates, such as doors, light towers, and turnstiles upon a passing test result.
 - Relay B is non-operational.
- **Electrical**
 - Power: 120-240V AC
 - IMPORTANT – ONLY use the OEM supplied 12V powers supply. DO NOT USE 24V.



Botron B89015 Elite On-Demand Basic Tester with Large Turnstile Data Sheet

Easy Pass Small Turnstile Specifications

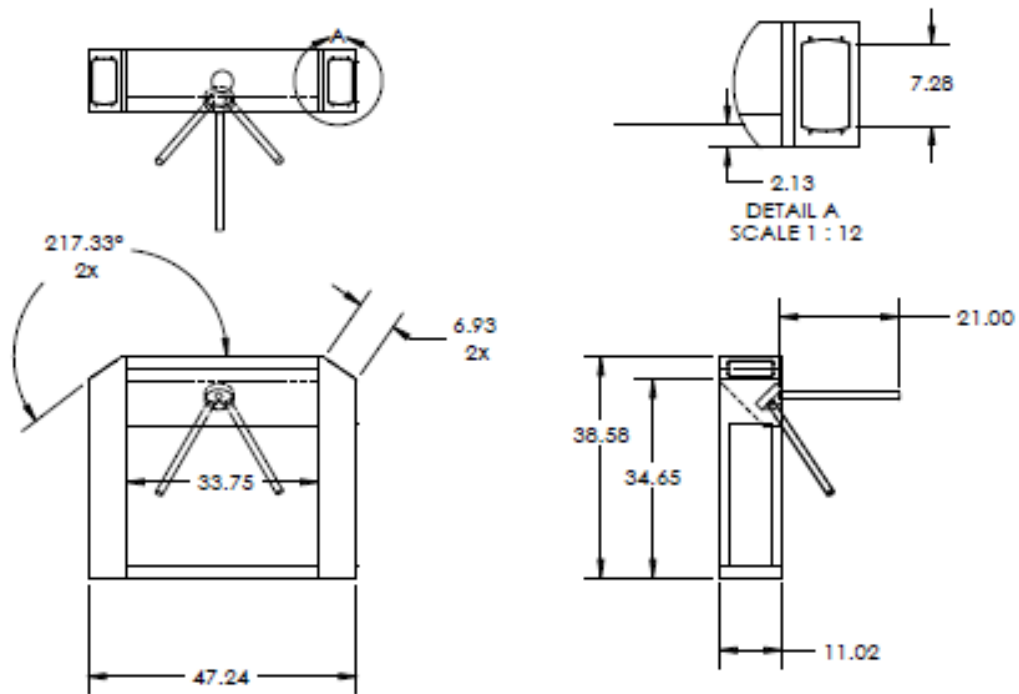
Turnstile Specifications:

- Power Supply Voltage: 110V-240V, 50HZ
- Working temperature : $-35^{\circ}\text{C} \sim 60^{\circ}\text{C}$
- Size : L1200*W280*H980mm
- Material : 304 Stainless Steel
- Weight : 60Kg
- Arm length : 500(mm)
- Arm turning direction: Single direction, Bi-directional.
 - (Optional Add-On B88178 No Touch Exit Switch)
- Relative Humidity : $\leq 95\%$, No Condensation
- Max Access Width: 600mm
- Passing Speed : 30people/min



Botron B89015 Elite On-Demand Basic Tester with Large Turnstile Data Sheet

Large Turnstile Dimensions





Botron B89015 Elite On-Demand Basic Tester with Large Turnstile Data Sheet

For more Elite Complete Technical Specifications click on the links below:

- **Elite On Demand Basic Tester Manual Link**
 - <https://support.botron.com/user-manual/elite-on-demand-esd-test-system-manual/>