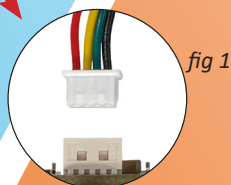
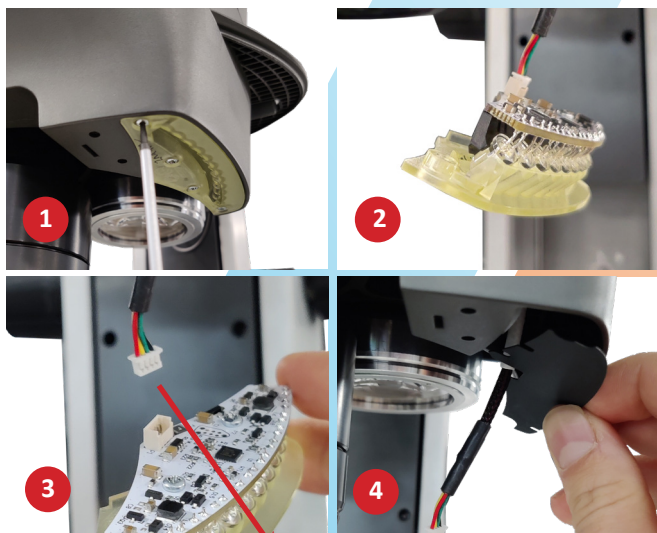




MANTIS  
UV/WHITE LED MODULE  
ASSEMBLY GUIDE



## HEALTH & SAFETY

- Do not look directly into the illumination source. This may cause damage to eyesight.
- When using the UV illumination options the following mitigations are required;
  - Always wear supplied eye protection when using the UV LED.
  - Turn off UV LEDs when not in use.
  - Cover exposed skin when using UV for prolonged periods of time.
  - Users to perform their own risk assessment for their working environment.

## REMOVAL AND FITTING OF LED REPLACEMENT

- Tools required: T8 Torx head screwdriver.
- Ensure that the Mantis head is disconnected from power.
- Remove the 2 retaining screw using the T8 Torx head screwdriver (front and back, the middle two should not be removed) (1).
- Pull down the LED module along with the connecting cable (2).
- Carefully disconnect the LED Cable from the module to be replaced (3) and attach new module to LED Cable, (see *fig 1* for correct orientation).
- Replace the black LED blind if this has fallen out during this process (4).
- Feed any excess cable into the head and refit the LED module.
- Secure with the 2 retaining screws previously removed.
- Repeat on other side if required.
- Stick the supplied label to the front cover in the approximate position shown (*fig 2*).

## LED DIMMER CONTROLS

Use the On/Off switch on the rear right of the unit to switch the lighting off. This will turn on again with the same lighting settings as when it was turned off.

## PIXO & ERGO HEADS WITH STANDARD LEDS HAVE 2 MODES OF OPERATION

### Joint Lighting

- Left and Right LED arrays dim together.
- Control from either dimmer control.

### Individual Control

- Left and Right LED arrays are dimmed individually.
- Right dimmer controls right LED array.
- Left dimmer controls left LED array.

Push in either dimmer control to alternate between individual & joint control.

## WHITE - UV LIGHTING OPTION

- When the White-UV lighting option is fitted, press in both Left & Right Dimmer controls at the same time to toggle between White only, UV only and combined White & UV LEDs.
- Controls for light intensity remain the same.

Left  
Dimmer  
Control



Right  
Dimmer  
Control

