



METALWARE

Raising the standard for industrial shelving since 1954



Introducing the E-Series Widespan Shelving System

Made in Canada - Designed and manufactured by METALWARE

Featuring the best weight capacity of METALWARE's storage systems, the E-Series Widespan Shelving System is a versatile "bulk storage" solution, also well-suited for heavier applications.

/ Benefits of E-Series Widespan shelving

- ✓ Lateral and vertical expansions using 12ga roll-formed posts
- ✓ Bays of shelving can be up to 8' wide and 4' deep
- ✓ Provides double-sided picking and quick access to products
- ✓ Choice of wood, wire or metal shelving



E-Series Widespan shelving application for a third-party distribution center.



Multi-level system using E-Series Widespan shelving customized for conveyors in a distribution center with uneven floors.

Call your local METALWARE Representative toll free at 1-833-937-9533
or email info@metalware.ca.

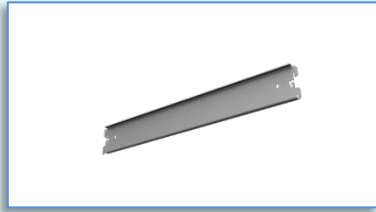


METALWARE

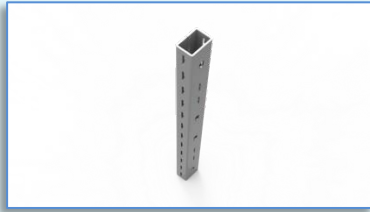
Raising the standard for industrial shelving since 1954



/ E-Series Widespan - Features



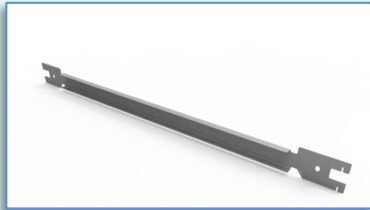
FRAME CONNECTOR



ROLL-FORMED POST



SPLICE BRACKET



BEAM



TIE BAR



SHELF TYPE OPTIONS



1. Frame connector up to 4' deep
2. 12ga roll-formed post
3. Splice bracket (does not cause any interference)
4. Beam lengths 3' – 8' wide, load up to 1500 lbs
5. Tie bar
6. *Wood, steel or wire mesh shelf options, adjustable at 2" increments

*A minimum of 5/8" industrial grade particle wood, cut to nominal dimensions, is recommended.

Call your local METALWARE Representative toll free at 1-833-937-9533
or email info@metalware.ca.



METALWARE

Raising the standard for industrial shelving since 1954



Check out **METALWARE's** E-Series Widespan video [here](#). The different ways you can optimize your client's warehouse space are endless.

/ E-Series Widespan shelves and more by METALWARE

Complete your next storage proposal with a full line of options **designed and manufactured by METALWARE**. Visit www.metalwareshelving.com and always count on:

- Fast response time
- A team that cares about your project
- Detailed proposals
- Durable quality



Our promise to you

- Strength
- Support
- Integrity

/ METAL THAT WORKS

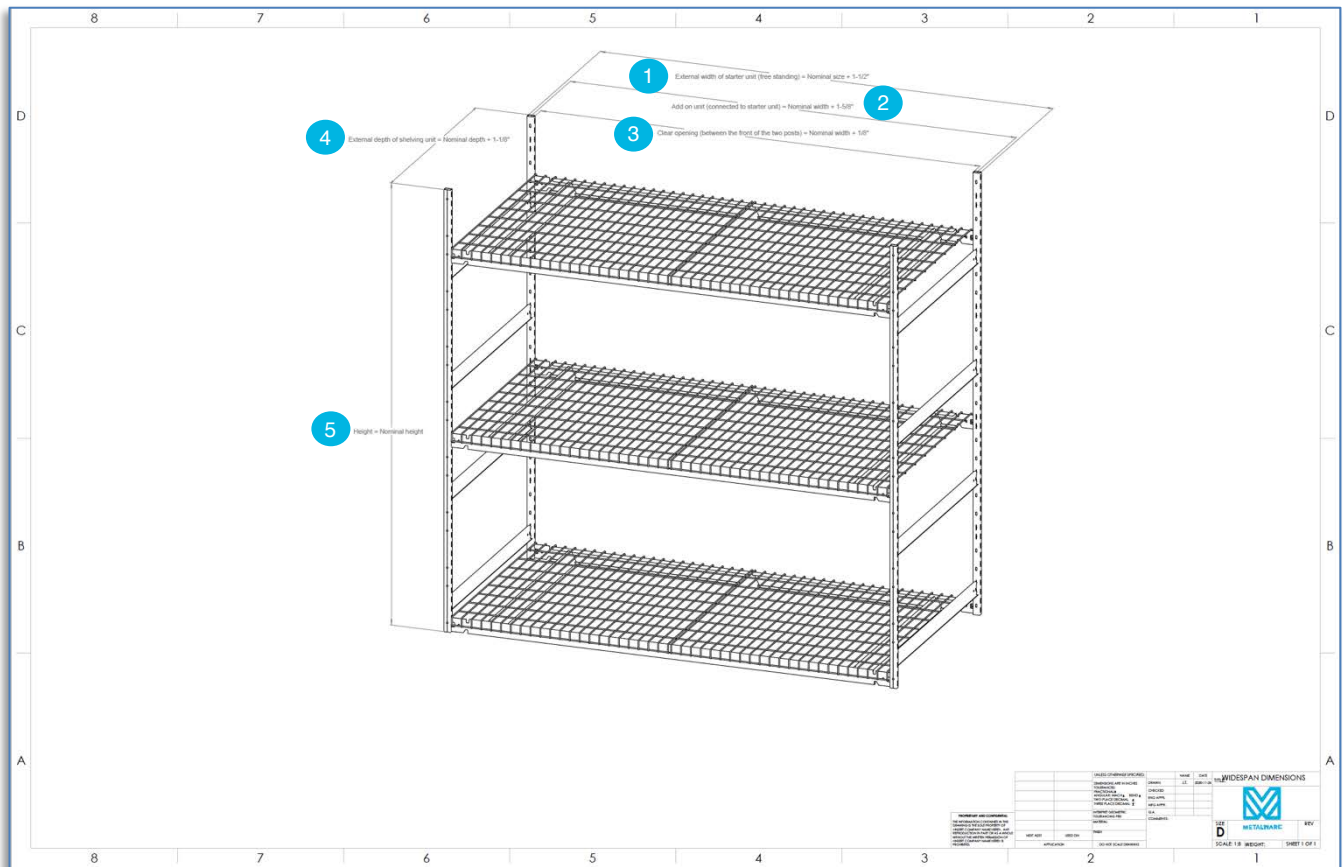
Think **METALWARE** and find the space-saving solution your clients need!

Call us toll free at **1-833-937-9533** or send an email to info@metalware.ca for more information. Visit www.metalwareshelving.com to access any marketing material required for your next proposal.

Call your local METALWARE Representative toll free at 1-833-937-9533
or email info@metalware.ca.



/ E-Series Widespan Nominal Dimensions & Clearances



1	External width of starter unit (free standing) = Nominal size + 1 ¹ / ₂ "
2	Add on unit (connected to starter unit) = Nominal width + 1 ⁵ / ₈ "
3	Clear opening (between the front of the two posts) = Nominal width + 1 ¹ / ₈ "
4	External depth of shelving unit = Nominal depth + 1 ¹ / ₈ "
5	Height = Nominal height

Call your local METALWARE Representative toll free at 1-833-937-9533
or email info@metalware.ca.



METALWARE

Raising the standard for industrial shelving since 1954

E-SERIES WIDESPAN SHELVING SIZE CHART

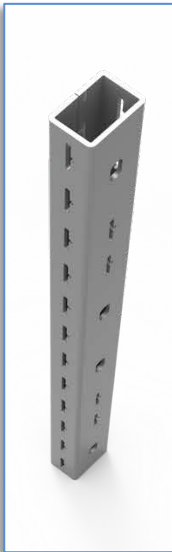
Widespan Pair of Beams capacity

36" - 1TB	42" - 1TB	48" - 1TB	48" - 2TB	60" - 2TB	66" - 2TB	72" - 2TB	84" - 2TB	96" - 2TB	96" - 3TB
1500	1350	1100	1300	970	840	770	850	765	950

Capacity per pair of beams only.
Units are available in 12", 15", 16", 18", 24", 30", 32", 36", 42" & 48" deep.
*Triangular tie bars for 84" and 96" beams only

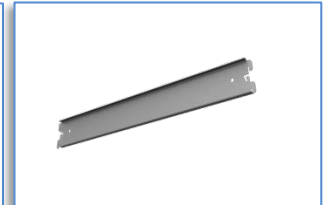
E-SERIES WIDESPAN STANDARD POST SIZE CHART

POST	STEEL GAUGE
36" high	12 gauge
48" high	12 gauge
60" high	12 gauge
72" high	12 gauge
84" high	12 gauge
96" high	12 gauge
108" high	12 gauge
120" high	12 gauge
144" high	12 gauge



E-SERIES WIDESPAN STANDARD FRAME CONNECTOR SIZE CHART

FRAME CONNECTOR	STEEL GAUGE
12" long	14 gauge
15" long	14 gauge
16" long	14 gauge
18" long	14 gauge
24" long	14 gauge
30" long	14 gauge
32" long	14 gauge
36" long	14 gauge
42" long	14 gauge
48" long	14 gauge



Call your local METALWARE Representative toll free at 1-833-937-9533
or email info@metalware.ca.