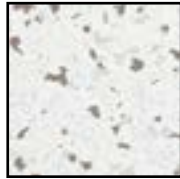
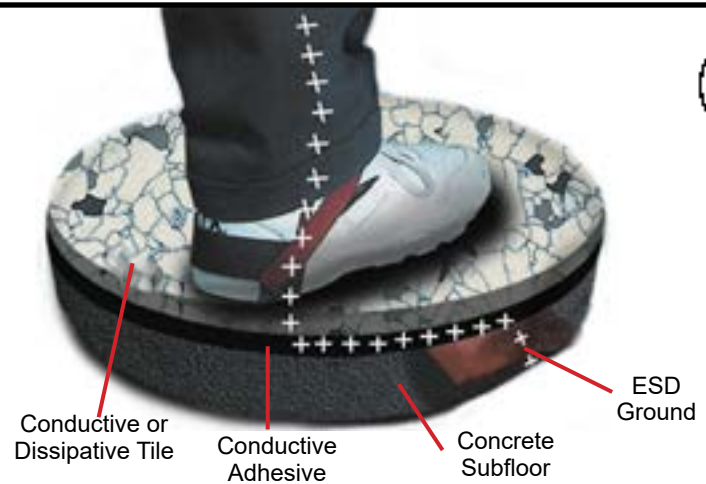


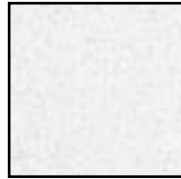
8400 Series Statguard® Vinyl Floor Tile

8400 Series Statguard® Vinyl Floor Tile is a long-term solution for helping control ESD. This durable and attractive vinyl tile can easily be installed by competent flooring contractors (using conductive adhesive and grounding strips). The flexible, resilient tiles are made with only 100% pure vinyl and contain a minimum amount of filler and none of the regrind that can make tile brittle. Both the “conductive” and “static-dissipative” versions are available in a selection of bright, vivid colors. A proprietary manufacturing process completely seals in the conductive carbon medium, resulting in a unique tile that can be easily cleaned and shined to a gloss while maintaining its electrical properties – without the use of an ESD wax or polish.



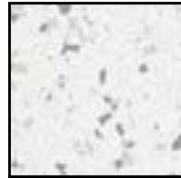
Brown

[8411](#) (Dissipative)
[8431](#) (Conductive)



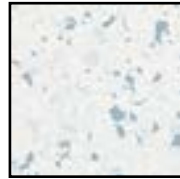
White

[8412](#) (Dissipative)
[8432](#) (Conductive)



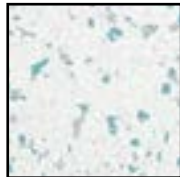
Gray

[8413](#) (Dissipative)
[8433](#) (Conductive)



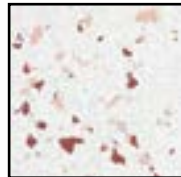
Blue

[8414](#) (Dissipative)
[8434](#) (Conductive)



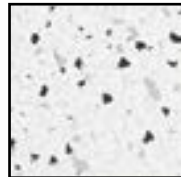
Green

[8415](#) (Dissipative)
[8435](#) (Conductive)



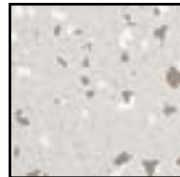
Maroon

[8416](#) (Dissipative)
[8436](#) (Conductive)



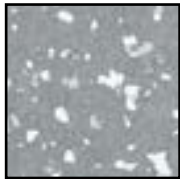
Black

[8417](#) (Dissipative)
[8437](#) (Conductive)



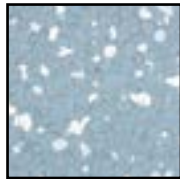
Reverse Brown

[8421](#) (Dissipative)
[8441](#) (Conductive)



Reverse Gray

[8423](#) (Dissipative)
[8443](#) (Conductive)



Reverse Blue

[8424](#) (Dissipative)
[8444](#) (Conductive)



Reverse Black

[8427](#) (Dissipative)
[8447](#) (Conductive)

Meets ANSI/ESD S20.20 flooring required limit tested per ANSI/ESD STM7.1 and ESD TR53, and is suitable flooring component for personnel grounding Footwear / Flooring System.

Per ANSI/ESD STM7.1 / Annex A: The resistance of 1×10^6 ohms is historically a number used to define the point where the conductive range becomes dissipative for flooring. The difference in the actual ESD properties of the floor is negligible between 5.0×10^5 and 5.0×10^6 ohms. Therefore, the slight variations at 1.0×10^6 ohms have negligible effects on ESD properties. Based on variation in instrumentation and other conditions, materials that test close to or at 1.0×10^6 ohms may be classified in either the conductive or dissipative range.

Limited Warranty, Warranty Exclusions, Limit of Liability and RMA Request
Instructions: <http://statguard.descoindustries.com/Limited-Warranty.aspx>

Mechanical Properties	Typical Value	Test Method
Flammability: Flame Spread Index		ASTM E84 Meets Class 1 requirements
Critical Radiant Flux	> 1.1 w/cm. sq.	ASTM E648
Physical Specifications		Meets ASTM F1700-13A
Abrasion Resistance Taber H22 wheel	Pass	ASTM D 3389
Electrical Properties		
Electrical Resistance Dissipative Tile	1×10^6 to $< 1 \times 10^9$ ohms	ANSI/ESD STM7.1 ANSI/ESD STM97.1
Conductive Tile	2.5×10^4 to $< 1 \times 10^6$ ohms	ANSI/ESD STM7.1 ANSI/ESD STM97.1
Static Generation (Walking Voltage) Dissipative Tile Conductive Tile	<50 Volts <25 Volt	ANSI/ESD STM97.2 ANSI/ESD STM97.2
With 2051 Shoe Grounder Assembly at 12% RH ($\pm 3\%$ RH at $73^\circ\text{F} \pm 2^\circ$)		
General		
Sizes Available:	0.125" x 12" x 12" / 3.2mm x 305mm x 305mm 0.125" x 24" x 24" / 3.2mm x 610mm x 610mm 0.125" x 36" x 36" / 3.2mm x 915mm x 915mm 0.079" x 12" x 12" / 2mm x 305mm x 305mm 0.079" x 24" x 24" / 2mm x 610mm x 610mm 0.079" x 36" x 36" / 2mm x 915mm x 915mm	

10 year Material Warranty

Lifetime Electrical Resistance Properties

Made in Canada. Specifications and procedures subject to change without notice.

8400 SERIES STATGUARD® VINYL FLOOR TILE

1 COLGATE WAY, CANTON, MA 02021
WEB SITE: StatguardFlooring.com
PHONE (781) 821-8370

DRAWING
NUMBER
8400

DATE:
January
2022

STATGUARD FLOORING