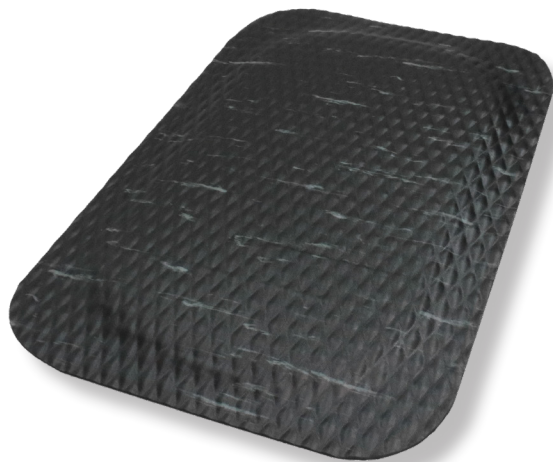




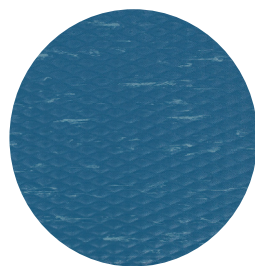
Hog Heaven[®] Marble Mats

Anti-Fatigue Mats • Indoor

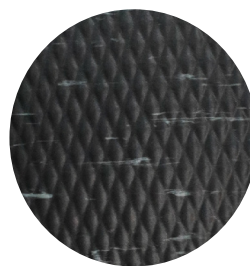
Hog Heaven Marble mats feature the same excellent anti-fatigue qualities of a standard Hog Heaven mat, but with a smooth surface that allows workers to pivot freely.



- **Comfortable** – High-density, closed-cell nitrile-blended cushion helps eliminate pressure to the lower back and legs, providing superior comfort; smooth top allows workers to pivot freely
- **Safe** – Certified high-traction by the National Floor Safety Institute (NFSI); sloped edges provide a safe transition from floor to mat
- **Durable** – Surface is molded, not glued, to the nitrile-blended cushion so it will not separate
- **Easy to Clean** – Smooth diamond-patterned vinyl surface is easy to clean
- **Available in 5/8" or 7/8" thicknesses and three neutral colors to blend with any décor**



Blue Merle

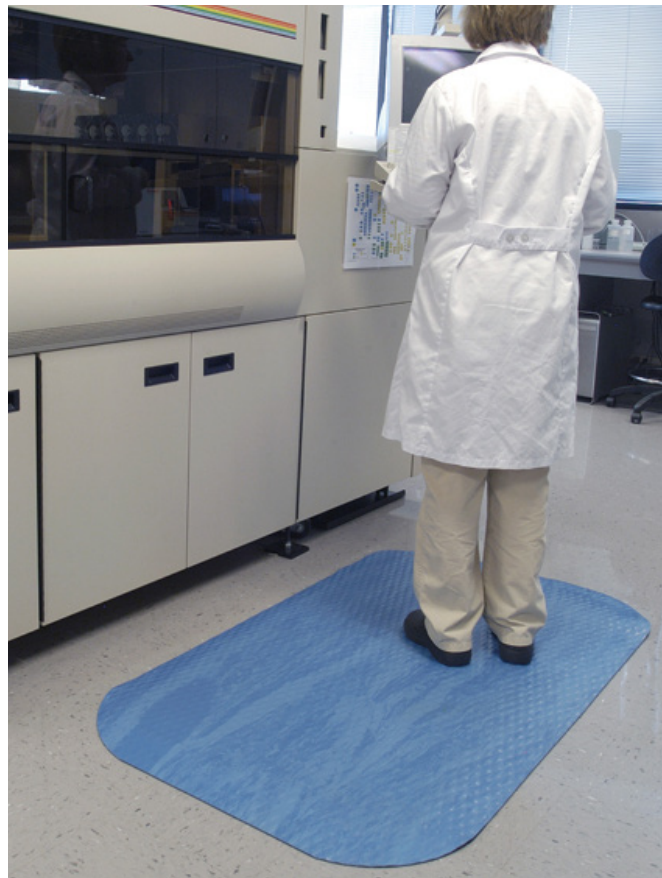
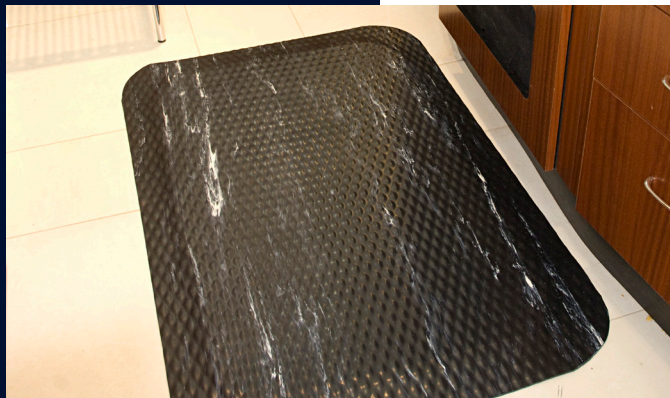


Midnight Swirl

Colors may vary due to inconsistencies of various display monitors or printers (if you're viewing a printed version of this document). Color images are intended to be used as a guide only.

Hog Heaven® Marble Mats

Anti-Fatigue Mats • Indoor



Product No. 448 (5/8" thickness)

Size (ft.)	Size (in.)	Product Weight
2' x 3'	23" x 32"	7 lbs.
3' x 5'	32" x 58"	20 lbs.
3' x 12'	32" x 143"	45 lbs.

Additional Sizes:

3' x 3'	32" x 34"	12 lbs.
3' x 4'	32" x 46"	16 lbs.
3' x 6'	32" x 70"	24 lbs.
3' x 7'	32" x 82"	28 lbs.
3' x 8'	32" x 94"	32 lbs.
3' x 9'	32" x 106"	36 lbs.
3' x 10'	32" x 118"	38 lbs.
3' x 11'	32" x 130"	44 lbs.
3' x 13'	32" x 154"	52 lbs.
3' x 14'	32" x 166"	56 lbs.

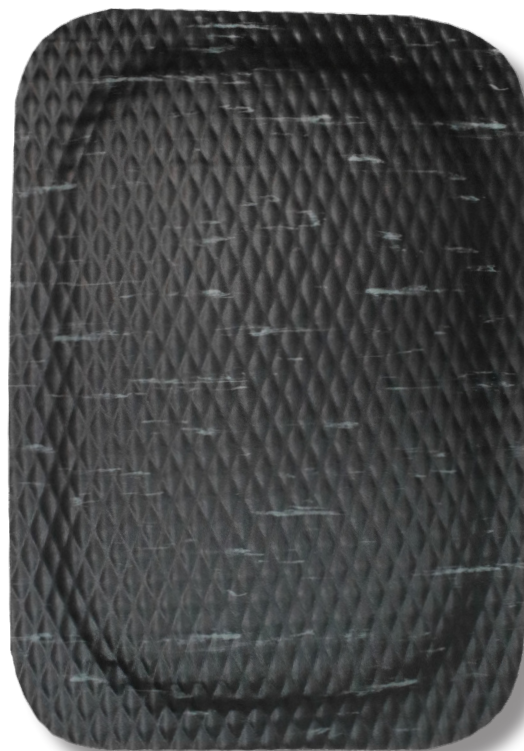
Product No. 449 (7/8" thickness)

Size (ft.)	Size (in.)	Product Weight
2' x 3'	23" x 32"	10 lbs.
3' x 5'	32" x 58"	21 lbs.
3' x 12'	32" x 143"	48 lbs.

Additional Sizes:

3' x 3'	32" x 34"	13 lbs.
3' x 4'	32" x 46"	17 lbs.
3' x 6'	32" x 70"	26 lbs.
3' x 7'	32" x 82"	30 lbs.
3' x 8'	32" x 94"	34 lbs.
3' x 9'	32" x 106"	39 lbs.
3' x 10'	32" x 118"	40 lbs.
3' x 11'	32" x 130"	47 lbs.
3' x 13'	32" x 154"	56 lbs.
3' x 14'	32" x 166"	60 lbs.

Note: Mat sizes are approximate as rubber shrinks and expands in conjunction with temperature and time. Tolerable manufacturing size variance is 3-5%.



M + A MATTING

800.241.5549

www.mamattng.com