

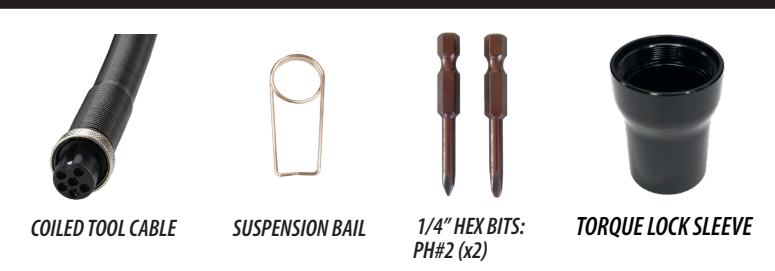
CESPT8 SERIES 40V PISTOL GRIP SCREWDRIVERS

2.7–159 in-lbs (0.3–18 Nm)

- Clean, powerful 40V brushless motor technology
- 1/4" hex drive
- Fan-cooled motor reduces heat build-up
- Dependable, long lifespan
- Two speed selections available
- Trigger start, forward/reverse switch
- Compact, ergonomic pistol housing
- Available with top or bottom cable connection
- Optional ESD-safe housing available
- CE/RoHS compliant



Tool Includes



COILED TOOL CABLE

SUSPENSION BAIL

1/4" HEX BITS: PH#2 (x2)

TORQUE LOCK SLEEVE

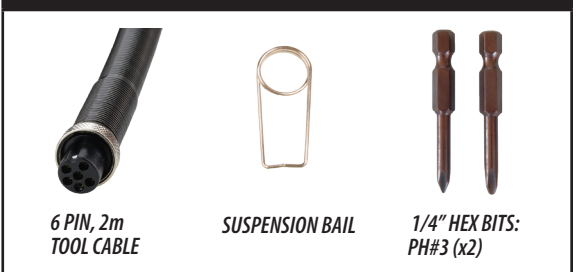
Model Number*	Torque Range		Speed (rpm)	Screw Diameter (mm)		Size (L x H)	Weight
	in-lbs	Nm		Machine	Tapping		
CESPT824	2.7–17.7	0.3–2	1200	2.3–3.5	2.3–3.0	185 x 150 mm (7.3 x 5.9")	0.7 kg (1.5 lbs)
CESPT828XF	8.8–26.5	1–3	3300	2.6–4.0	2.6–3.5		
CESPT828	7.1–26.5	0.8–3	1200	2.6–4.0	2.6–3.5		
CESPT829	17.7–44.3	2–5	700	4.0–5.0	≤4		

*Standard model has cable connection in bottom of handle — for top connection, add suffix 'U'. For ESD-safe housing, add suffix '-ESD'.



OPTIONAL TOP CONNECTION AVAILABLE

Tool Includes



6 PIN, 2m TOOL CABLE

SUSPENSION BAIL

1/4" HEX BITS: PH#3 (x2)

Model Number*	Torque Range		Speed (rpm)	Drive Type**	Size (L x H x dia)	Weight
	in-lbs	Nm				
CESP(T)835	18–53	2–6	1000	1/4" hex	270 x 169 x 48 mm (10.6 x 6.7 x 1.9")	1.2 kg (2.64 lbs)
CESP(T)845	27–79	3–9	800			
CESP(T)855	36–106	4–12	550			
CESP(T)865	53–159	6–18	350			

*Standard model has cable connection in bottom of handle — for top connection, add suffix 'U'. For ESD-safe housing, add suffix '-ESD'.

**3/8" Square Drive available — add suffix '-SQ'



7370 Commercial Circle, Fort Pierce, FL 34951
772.465.4302

www.deltaregis.com
sales@deltaregis.com