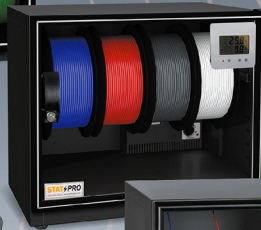


3D PRINTING SERIES FILAMENT DRY CABINET



FD-3D25



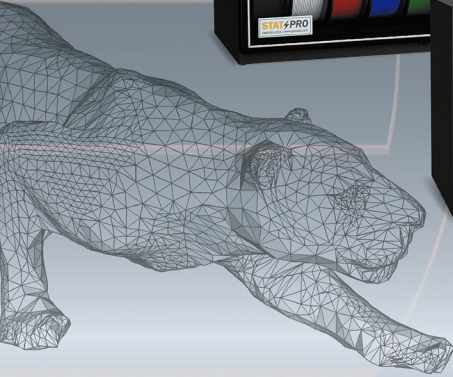
AW-3D80P



ADL-3D77



ADL-3D122N



FD-3D25

<15%RH +/-5%RH



4 Filament Feed Ports For Direct Printing.
Feed Ports 6mm OD / 4mm ID PTFE Tubing

Lock-2 keys Included

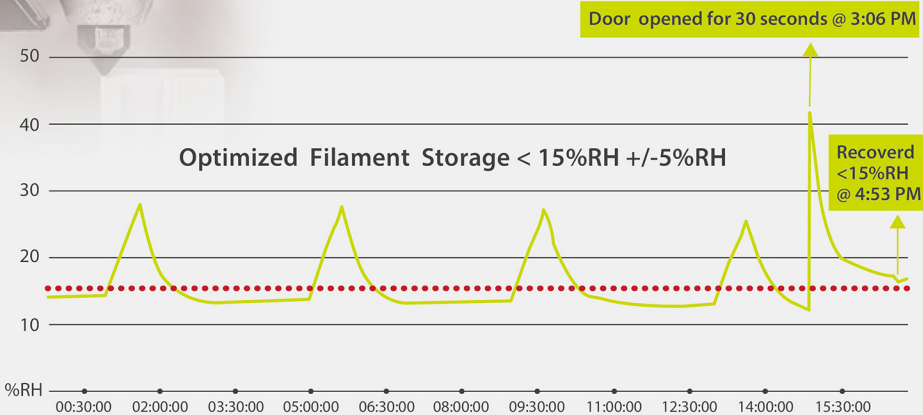
Analog Hygrometer

Filament Spool Capacity :
Up to 5 x 1 kg 200mm spools
(estimated).

External Dimensions (WxHxD)
38x26x26 (cm) 14.96x10.23x10.23 (inch)
Internal Dimensions (WxHxD)
34x24x22 (cm) 13.38x9.45x8.66 (inch)

24 Liter

FD-3D25 Performance Data Log

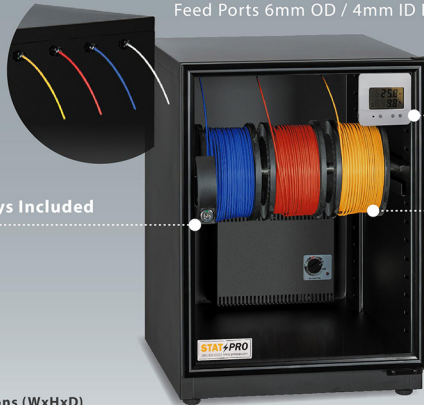


ADL-3D77

<10%RH +/-5%RH

4 Filament Feed Ports For Direct Printing.

Feed Ports 6mm OD / 4mm ID PTFE Tubing



Lock-2 keys Included

Digital Hygrometer

Filament Spool Capacity :
Up to 16 x 1kg 200mm spools
(estimated).

External Dimensions (WxHxD)

40x55.5x44.5 (cm) 15.75x21.85x17.5 (inch)

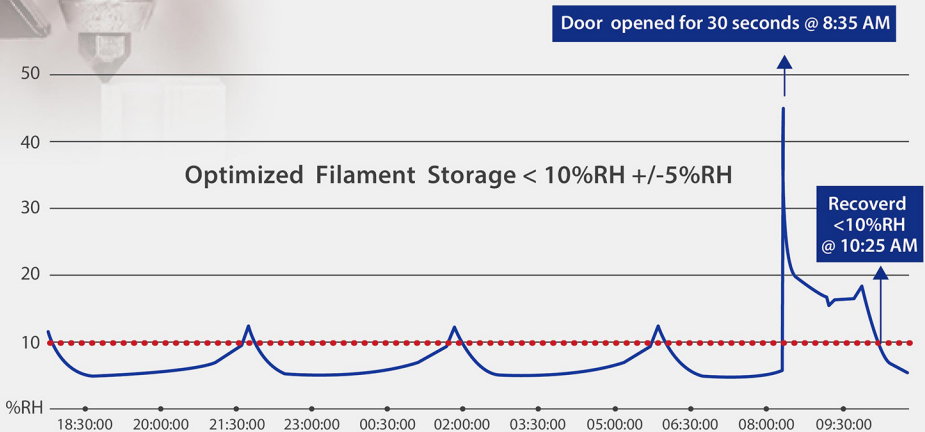
Internal Dimensions (WxHxD)

32x46x32.5 (cm) 12.60x18.10x12.80 (inch)

79 Liter

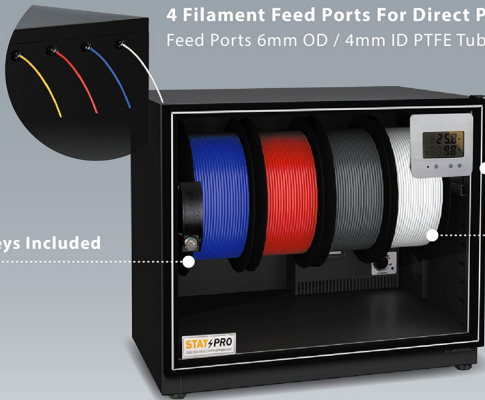
ADL-3D77

Performance Data Log



AW-3D80P

<10%RH +/-5%RH



4 Filament Feed Ports For Direct Printing.
Feed Ports 6mm OD / 4mm ID PTFE Tubing

Digital Hygrometer

Filament Spool Capacity :
Up to 16 x 1kg 200mm spools
(estimated).

Lock-2 keys Included

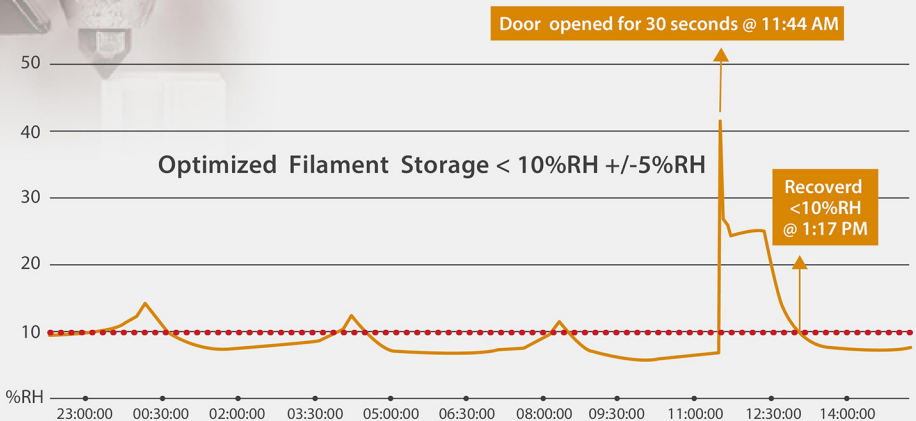
External Dimensions (WxHxD)
54x47x41 (cm) 21.26x18.50x16.14 (inch)

Internal Dimensions (WxHxD)
50x37.4x35.6 (cm) 18.90x14.84x11.41 (inch)

81 Liter

AW-3D80P

Performance Data Log



ADL-3D122N

<10%RH +/-5%RH



4 Filament Feed Ports For Direct Printing.

Feed Ports 6mm OD / 4mm ID PTFE Tubing

Lock-2 keys Included

Digital Hygrometer

Filament Spool Capacity :
Up to 25 x 1kg 200mm spools
(estimated).

External Dimensions (WxHxD)

40x84x44.5 (cm) 15.75x33x18.5 (inch)

Internal Dimensions (WxHxD)

32x74x32.5 (cm) 12.60x32.28x15.35 (inch)

125 Liter

ADL-3D122N

Performance Data Log

