

## How to use the ASCR-33

As shown on the placard on the front of the remover unit, removal of your shoe covers is as easy as 1,2,3. Side note: If you are using fabric shoe covers (7FAB-80/100 or 7FWT-80/100), please make sure the fabric shoe cover toothed adaptor plate is installed prior to use.

Instructions for removal are as follows:

1. Press and hold the button on the handlebar and lightly place your heel against the vacuum port. Make sure to not allow your clothing to be drawn into the vacuum port along with the shoe cover.
2. Once appropriate suction is achieved, lift your foot out of the shoe cover heel first, allowing the machine to remove and dispose of the shoe cover.
3. Repeat step 2 with your other foot and pause for approximately one second before releasing the button.

When used properly, the ASCR-33 can hold approximately 600 shoe covers before the bag inside the interceptor needs to be changed (depending on the type of shoe cover, it may hold even more). To achieve maximum capacity, the interceptor bag will need to be compacted periodically. An operator will know this needs to be done when there is a loss of suction. To compact the interceptor bag simply lift the lid, pick up the sides of the 3-mil bag, fold the sides over the shoe covers, and push them down. Re-deploy the bag, taking care not to cover the metal tab at the back of the interceptor, and close the lid. The remover is now ready for ongoing use.

## Troubleshooting

The vacuum isn't turning on:

1. Check that the unit and the receiver are plugged in.
2. Check that the batteries are working in the transmitter.
3. Inspect button for failure.

The vacuum is turning on, but there is little or no suction:

1. Check to see if the interceptor bag needs to be compacted or the bag is full (can no longer be compacted) and needs to be changed.
2. Check the hose from the remover to the interceptor for clogs.
3. Inspect the HEPA bag in the power unit. It may be clogged and need to be changed.
4. Check the inside of the power unit for any obstruction over the metal mesh screen at the bottom.

# CleanPro Remover

## Automatic Shoe Cover Remover

### User Manual

#### ASCR-33

The logo for CleanPro, featuring the brand name in a bold, blue, italicized sans-serif font. A green swoosh underline is positioned above the letters 'o' and 'r'. A registered trademark symbol (®) is located at the bottom right of the swoosh.

## Table of Contents

Introduction	2
Parts Inventory	2
Setup of the ASCR-33	3
How to use the ASCR-33	4
Troubleshooting	4

## Introduction

Thank you for purchasing the Shoe Inn ASCR-33 automatic shoe cover remover. Your company has now completed the automatic shoe cover system. Just like our line of shoe cover dispensers, the Shoe Inn ASCR-33 Remover makes the removal of Shoe Inn shoe covers faster, easier, safer, and cleaner.

## Parts Inventory

Before you get started taking shoe covers off faster, easier, safer, and cleaner, please refer to the inventory list and photos below to verify all the necessary parts have arrived with your shipment.



1 Interceptor (large canister)



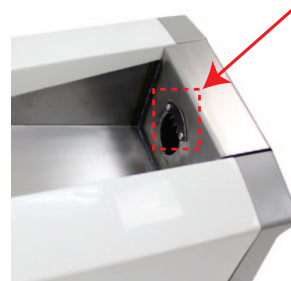
1 Power unit (smaller canister) with HEPA filtration bag and signal receiver



2 Hoses with connector cuffs and hose clamps (inside large canister)



1 Shoe cover remover with installed transmitter



1 Fabric shoe cover adaptor plate and hardware (pre-installed)



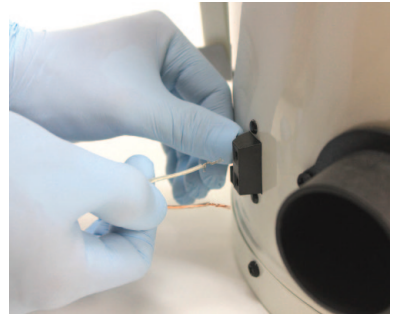
1 Package of ten (10) 3-mil plastic bags (inside large canister)

Please note: Inventory of all the parts is checked prior to shipping. In the unlikely event a part is missing, please call CleanPro at (888) 903-0333 for prompt replacement.

## Setup of the ASCR-33

To set up the ASCR-33 start with the power unit (the smaller canister with the power cord). The power unit may be mounted to a wall if you choose.

1. Plug the signal receiver wires into the small black receiver on the side of the power unit by pressing down on each tab, inserting each wire and releasing the tab. One wire must be plugged into each port but the wire color is not important. Note: please locate the signal receiver at least three feet away from the power unit to avoid potential signal interference.



2. Open the 33-gallon interceptor (the larger canister) and place one of the 3-mil plastic bags around the rim of the barrel while making sure to NOT cover the metal tab at the back of the interceptor. See the decal inside the interceptor for further instructions.



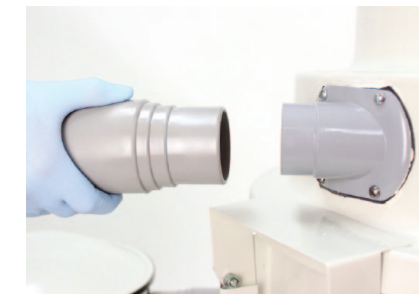
3. Attach vacuum hose with supplied clamp to the top port on the power unit.



4. Attach the other end of the hose and hose clamp to the top port on the 33-gallon interceptor.

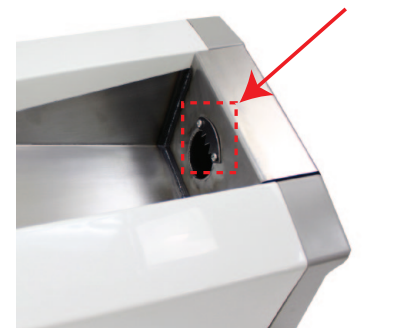


5. Attach the second hose and hose clamp to the side port of the 33-gallon interceptor. Connect the other end of the hose and hose clamp to the metal tube at the back of the remover.



6. Plug in the power unit and the signal receiver into a standard 120V wall outlet.

7. If you are using non-porous/non-fabric shoe covers that do not require the toothed adaptor plate, it is recommended that you remove the fabric shoe cover adaptor plate in order to optimize shoe cover removal.



**Congratulations! The setup of your ASCR-33 is complete.**