

Gibo | Kodama

ERGONOMIC & TECHNICAL SEATING



ESD
SEATING



ESD Option



PN: E380BT-AB-F852-R20-A28P-07B-TE POL
(Model pictured may not be standard model.)

Chairs are an important component to creating an ESD safe environment for sensitive equipment or products. As a recognized leader in the industry, Gibo/Kodama Chairs offers an ESD option on many of our chairs. In addition to using high quality components and a precise manufacturing process, we test all of our chairs prior to shipping using the ANSI/ESD STM12.1-2013 test method.

(Gibo/Kodama Chairs is a member of the EOS/ESD Association.)

ESD STANDARD PACKAGE:

ESD casters (07-desk ht, 07B-bench ht)
ESD aluminum base with PCB ESD disk
ESD cylinder
ESD control mechanism
Static dissipative fabric or vinyl for upholstered parts

OPTIONS:

Variety of ESD casters/glides
ESD arms/armpads upholstered with ESD fabric or vinyl
Variety of upholstery colors

AVAILABLE ON THE FOLLOWING SERIES:

1 Series:	Task Stools
3 Series:	Task Chairs
4 Series:	Large Task Chair
6 Series:	Special Task Chairs
7 Series:	Saddle Seat Task Chairs
8 Series:	Class 10 Cleanroom

Office:	Alpha, Catalina, Coronado, Huntington, Intrepid, Respon
---------	---

Stamina 3 Series *Standard Task Chair*



The Stamina 3 Series offers many ergonomic features and options that make the chairs adaptable to most end users and their required applications. They have become a standard in many Fortune 1000 companies.



STD BACK
(A) 12 1/2"H

HIGH BACK
(B) 16"H

EXTRA HIGH BACK
(C) 20"H

Specifications:

Seat: 19" W x 18" D, contoured seat with 2 1/2" thick high resilient foam (A)

Back: 17 1/2" W x 12 1/2" H fully upholstered standard back, 2 1/2" high resilient foam (A)

AT Control: 3 levers - Seat height, seat angle, back angle. Back height adjusted with knob.

Footring - 20" diameter, adjustable chrome (for bench heights only)

Base: 28" diameter aluminum base, polished or black powder coated

Casters: 2" hard dual wheel caster, black or chrome hooded

Weight capacity: 300 lb.

Options:

Seat Height Range - Multiple height ranges available

Model 345 - approx 17" to 21 1/2" (desk ht)

Model 365 - approx 19" to 25 1/2" (low bench ht)

Model 380 - approx 22" to 29 1/2" (mid bench ht)

Model 390 - approx 25" to 35" (high bench ht)

Control: Back Tilt (BT), Independent Tilt (IT)

Back: High back - 16"H (B)

Extra high back - 20"H (C)

Seat: Waterfall seat pan - 19"W x 18"D (B)

Short contour seat pan - 19"W x 16 1/2"D (C)

Short waterfall seat pan - 19"W x 16 1/2"D (D)

Arms - Adjustable, fixed and rotating

Armpads - Upholstered and polyurethane

Upholstery - Selection of fabrics and vinyls

Base - 5-Legged nylon base

Casters - Selection of casters and glides

ESD Package

Cleanroom Package



PN: 390BT-AA-V523-R20-A28P-09B POL
(Model pictured may not be standard model.)

Stamina 7 Series Saddle Seat Task Chair



PN: 790BT-EB-V557-R20-A28P-01 POL
(Model pictured may not be standard model.)

The Stamina 7 Series features a saddle seat for both comfort and stability while performing tasks. It was especially designed to help prevent workers in cleanroom apparel from slipping out of their chairs. In addition, the front of the saddle seat is cut back to allow easier access to the 20" diameter footrest.

Specifications:

Seat: 20 1/2" W x 19" D, contoured seat with 2 1/2" thick high resilient foam (E)

Back: 17 1/2" W x 12 1/2" H fully upholstered standard back, 2 1/2" high resilient foam (A)

Upholstery: Heavy-duty fire retardant fabric or vinyl

AT Control: 3 levers - Seat height, seat angle, back angle. Back height adjusted with knob.

Footring: 20" diameter, adjustable chrome (for bench heights only)

Base: 28" diameter polished aluminum base

Casters: 2" hard dual wheel caster, chrome hooded

Weight capacity: 300 lb.

Options:

Seat Height Range - Multiple ranges available

Model 745 - approx 17" to 21 1/2" (desk ht)

Model 765 - approx 19" to 25 1/2" (low bench ht)

Model 780 - approx 22" to 29 1/2" (mid bench ht)

Model 790 - approx 25" to 35" (high bench ht)

Control: Back Tilt (BT), Independent Tilt (IT)

Back: High back - 16"H (B)

Extra high back - 20"H (C)

Seat: Short saddle seat - 20 1/2"W x 17 1/2"D (F)

Arms - Adjustable, fixed and rotating

Arm pads - Upholstered and polyurethane

Upholstery - Selection of fabrics and vinyls

Casters - Selection of casters and glides

ESD Package

Cleanroom Package



Synchron 4 Series *Standard Task Chair*



PN: 445IT-GE-F124-A28P-01-TF POL
(Model pictured may not be standard model.)

The Synchron 4 Series features a capacious waterfall seat and a large back, giving the firm support of a task chair and the comfort of an office chair. It comes standard with a heavy-duty Independent Tilt control that allows for independent adjustments of your seat angle and back angle. The many options make this chair adaptable for a wide range of applications.

Specifications:

Seat: 22" W x 20" D, capacious waterfall seat with 2 1/2" thick high resilient foam (G)

Back: 20" W x 18" H deluxe back, 2 1/2" high resilient foam, built in lumbar (E)

IT Control: 3 levers - Seat height, seat angle, back angle. Back height adjusted with knob.

Footring - 20" diameter, adjustable chrome (for bench heights only)

Base: 28" diameter aluminum base, polished or black powder coated

Casters: 2" hard dual wheel caster, black or chrome hooded

Weight capacity: 300 lb.

Options:

Seat Height Range - Multiple height ranges available

Model 445 - approx 17 1/2" to 22" (desk ht)

Model 465 - approx 19 1/2" to 26" (low bench ht)

Model 480 - approx 22 1/2" to 30" (bench ht)

Seat: Short waterfall seat pan - 22"W x 18"D (S)

Arms - Adjustable, fixed and rotating

Armpads - Upholstered and polyurethane

Upholstery - Selection of fabrics and vinyls

Base - 5-Legged nylon base

Casters - Selection of casters and glides

ESD Package

Cleanroom Package





PN: E680IJ-BD-F851-R20-A28P-07B-TE POL
(Model pictured may not be standard model.)

The 6IJ Special Task Chair features a ratcheting back that allows for easy back height adjustment, and a waterfall seat pan with thick high resilient foam. Its Independent Tilt mechanism has a back angle and a seat angle that can be adjusted independently of one another.

Specifications:

Seat: 19" W x 18" D, waterfall seat with 2 1/2" thick high resilient foam (B)

Back: 19" W x 20" H mid-high back w/built-in lumbar and ratchet mechanism for height adjustment, 2 1/2" high resilient foam (D)

Upholstery: Grade 1 fabric or vinyl

IT Control: 3 levers - Seat height, seat angle, back angle.

Footring: 20" diameter, adjustable chrome (for bench height only)

Base: 28" diameter aluminum base, polished or black powder coated

Casters: 2" hard dual wheel caster, black or chrome hooded

Options:

Seat Height Range - Multiple height ranges available

Model 645 - approx 17 1/2" to 22" (desk ht)

Model 680 - approx 22 1/2" to 30" (bench ht)

Seat - Short waterfall seat pan - 19"W x 16 1/2"D (D)

Arms - Adjustable, fixed and rotating

Armpads - Upholstered and polyurethane

Upholstery - Selection of fabrics and vinyls

Base - 5-Legged nylon base

Casters - Selection of casters and glides

ESD Package

Cleanroom Package



PN: 145PL-OO-V523-A25P-01 POL
(Model pictured may not be standard model.)

Options:

Seat Height Range - Multiple height ranges available

Model 145 - approx 16 1/2" - 21"

Model 180 - approx 21 1/2" - 29"

Model 190 - approx 24" - 34"

Casters - Selection of casters & glides

Upholstery - Selection of fabrics & vinyls

ESD Package

Cleanroom Package

The 1000PL Series offers a basic round stool with multiple height ranges. The size and available options of the 1000PL Series make it the perfect special application chair. It can easily fit in areas where other chairs are too large.

This stool can be found in settings from laboratories to locker rooms, and from medical offices to automotive plants.

Specifications:

Seat: 15 1/2" diameter round seat with 2 1/2" thick high resilient foam (O)

PL Control: seat height adjustment only

Footring: 20" diameter, adjustable chrome (for bench heights only)

Base: 25" diameter aluminum base, polished or black powder coated

Upholstery: Grade 1 fabric or vinyl

Casters: 2" hard dual wheel caster, chrome or black hooded

Weight capacity: 300 lbs

Alpha

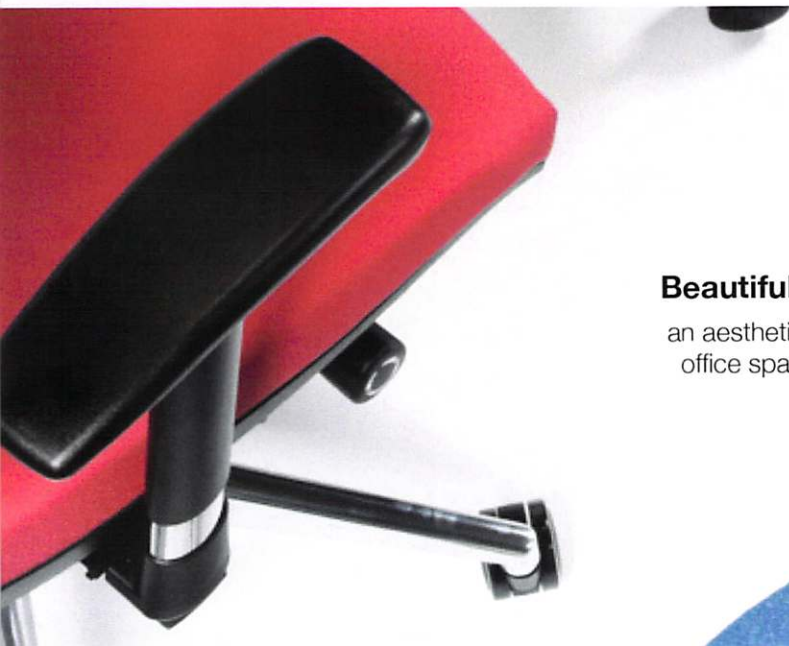
gk.
CHAIRS



Get more done.

Your chair is vital to your productivity. It is the part of your workspace that you constantly interact with. To be productive you have to feel right in your chair.

The contours, feel, and function of the Alpha were all thoughtfully designed to work for you and not against you. Let the ergonomics of Alpha help you to get more done.



Beautiful, yet simple.

an aesthetic that gives any office space a fresh look





Synchro-Tilt Control Mechanism

- Back/seat recline in a 2:1 ratio
- 4 lockable positions
- Seat depth adjustment
- Easy access side tension spring adjustment

Seat:

20" wide x 18" deep,
2" seat depth adjustment

Back:

18" wide x 21.5" high,
built in lumbar
2.5" ratcheting height

Base:

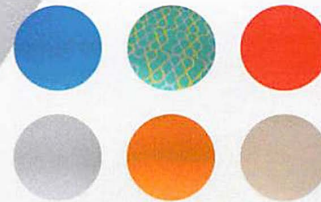
27" diameter
Nylon or aluminum

Casters:

60mm soft dual wheel

Upholstery:

Fabric or vinyl
Variety of colors, textures, etc



Arm Options

4-way adjustable:

(in-out, up-down, forward-backward, 30° rotation range)

Polyurethane arm pads

2-way adjustable:

(in-out, up-down)

Spring loaded arms for sturdy feel

Polyurethane arm pads



For more information and additional options, call (888) 903-0333 or visit www.gotopac.com

Intrepid *Capacious Ergonomic Chair - Intensive Use*



The capacious Intrepid chair was designed and tested for intensive use applications. It has all of the ergonomic functionality of the Huntington chair, but uses more rugged components to meet the higher standards of durability. It's large size accommodates the "big and tall" user.

Highlighted Feature:

The Intrepid features a unique "free-floating" mechanism that allows the seat and back to move independently as the user moves in their seat. This feature encourages dynamic movement throughout the day while maintaining consistent support through adjustable tension in the back. The control is also able to lock if the user would like the seat and back fixed in a certain position.



Specifications:

Seat Height Range: 18.5" to 23"

Seat: 24" wide x 22" deep, with high resilient foam

Back: 22" wide x 25" high fully upholstered back with built-in lumbar, high resilient foam, and ratcheting height adjustment.

IR Control: Heavy duty - Seat height, seat & back angle "free-float/lock" adjustment, and 2.5" seat depth adjustment

Base: Heavy duty 5-legged aluminum base

Casters: 10 black hooded, soft dual wheel caster

Weight capacity: 450 lb.

Options:

Arms - Adjustable up/down, in/out

Armpads - Upholstered and polyurethane

Upholstery - Selection of fabrics and vinyls

Casters - Selection of casters and glides

ESD Package

PN: IN51IR-NL-V552-TV-10 BLK

(Model pictured may not be standard model.)

EPS3 Series *ESD polyurethane task chair*



Specifications:

Seat: 18" wide x 17" deep, steel core

Back: 16.5" wide x 11.5" high with handle for easy mobility, steel core

AT Control: 3 levers - Seat height, seat angle, back height, and back angle adjustments

Footring: 20" adjustable chrome footring (bench height models only)

Base: 5 legged polished aluminum base

Casters: Chrome metal hooded, metal dual wheel, conductive caster

Weight capacity: 300 lb.

ESD Package: Overall resistivity: < 1E9 ohms

The EPS3 Series offers similar ergonomic features and adjustments as the Stamina 3 series but with the added durability of polyurethane seats and backs with a steel core. EPS3 chairs are especially designed for industrial use and to better withstand frequent exposure to cleaning chemicals.

Options:

Seat Height Range - Multiple height ranges available

Model EPS345 - approx. 16" to 20.5" (desk ht)

Model EPS365 - approx. 18" to 24.5" (low bench ht)

Model EPS380 - approx. 21" to 28.5" (mid bench ht)

Model EPS390 - approx. 24" to 34" (high bench ht)

Control - Back Tilt Control (BT) - seat height, back height, and back angle adjustments

Casters - Selection of ESD casters and glides

*Also available without ESD package (PS3)



PN: EPS380AT-R20-A28P-07B POL
(Model pictured may not be standard model)

ESD Casters



2" Conductive Soft Dual Wheel
06 - Chrome Hood
06B - Chrome Hood w/Brake
06RB - w/Reverse Brake

For ESD Tile, Epoxy & Concrete



2" Conductive Soft Dual Wheel
B06 - Black Hood
B06B - Black Hood w/Brake

For ESD Tile, Epoxy & Concrete



2" Die Cast Steel Dual Wheel
07 - Chrome Hood
07B - Chrome Hood w/Brake

For ESD Tile, ESD Carpet Tile



26 - 3" Conductive Soft
Dual Wheel

*For ESD Tile, Concrete, Raised
Grated ESD Cleanroom Floors*



04 - 2" Conductive Rubber
Single Wheel

For ESD Tile, ESD Carpet Tile

FUNCTION OF BRAKES:

06B, B06B, 07B

Brakes engage when chair is NOT in use. Brakes offer "roll resistance" only.

06RB

Reverse brakes engage when chair is occupied.



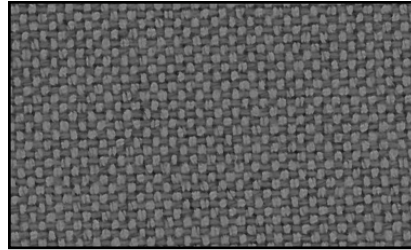
G3 - Conductive Chrome Plated
Steel Glide

For ESD Tile, ESD Carpet Tile

GRADE III CONDUCTIVE FABRIC



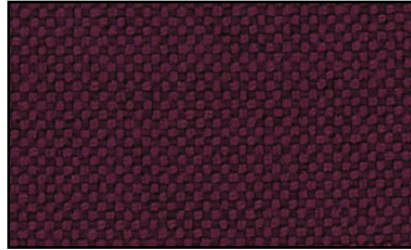
Blue
#F851



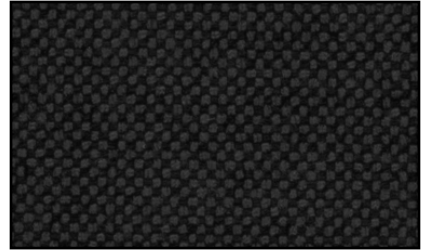
Charcoal
#F863



Navy
#F853

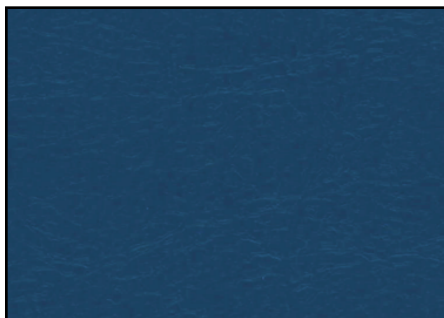


Burgundy
#F852

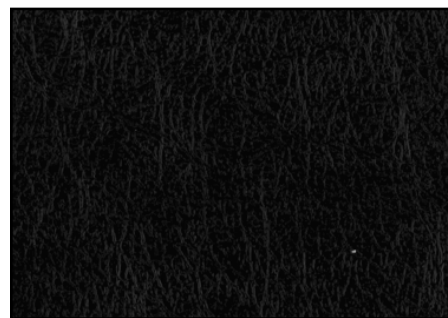


Dark Grey
#F865

GRADE II CONDUCTIVE VINYL



Royal Blue
#V901



Black
#V902

ESD SPECIFICATIONS

A. SURFACE RESISTIVITY

1. Fabric: Grade III ESD Fabric - 1.8×10^5 Ohms (BS6524: 1984)
2. Vinyl: Grade II ESD Vinyl - 1.6×10^7 Ohms (ASTM D-257)

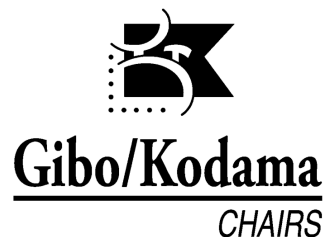
B. RATE OF DECAY - 5000 Volts down to 500 Volts

1. Fabric: Grade III ESD Fabric - approximately .20 seconds
2. Vinyl: Grade II ESD Vinyl - approximately .35 seconds

C. ESD CHAIR FEATURES

1. Casters
 - a. Standard - 07 (without brakes for desk height) or 07B (with brakes for bench height)
Chrome hooded, die cast steel dual wheel caster
 - b. Options:
 1. 04 - 2" single wheel, conductive
 2. 06 - 2" chrome hooded, conductive soft dual wheel caster
 3. 06B - 2" chrome hooded, conductive soft dual wheel w/brake
 4. B06 - 2" black hooded, conductive soft dual wheel caster
 5. B06B - 2" black hooded, conductive soft dual wheel w/brake
 6. G3 - chrome plated steel glide
 7. 26 - 3" diam., chrome hooded, conductive soft dual wheel for grated floors.
2. Removable PCB ESD Disk with 1 Megohm resistor to prevent accidental shock. Accessible and verifiable at bottom of chair base.
3. Knob or spring loaded clip in back upright makes connection between back and control.
4. Footring - Metal to metal cylinder contact

D. TESTING - All chairs are tested for continuous path to ground from seat and back before shipment.





Gibo/Kodama
CHAIRS

Warranty

GIBO/KODAMA CHAIRS MAKES THE FOLLOWING WARRANTY TO THE ORIGINAL CUSTOMER THAT ITS PRODUCTS WILL BE FREE FROM DEFECTS IN MATERIAL AND WORKMANSHIP.

Mechanical and structural parts are guaranteed to perform properly for a period of five (5) years of normal use when weight capacities are not exceeded. Maximum weight capacity for all chairs is 300 pounds with the exception of the Intrepid Intensive Use chair, which has a weight capacity of 450 pounds. Chairs sold for harsh environment conditions are guaranteed to perform properly for a period of one (1) year. This warranty does not apply to normal wear and tear to products. Cushions, fabric and vinyl are warranted for five (5) years of normal usage and will be pro-rated for multi-shifts. COM (Customer's Own Material) is not covered under this warranty.

Gibo/Kodama Chairs reserves the right to recondition or repair chairs covered by this warranty. All chairs needing repair must be shipped to the factory with a return authorization, freight prepaid. Replacement parts can be sent to customer if installation is not considered difficult. We reserve the right to require replaced components be returned to factory for inspection. Factory repaired chairs will be shipped at customer's expense and will have the remaining balance of the original warranty.

No implied warranties, including warranties of merchantability and fitness for a particular purpose, extend beyond the terms of these expressed warranties. These warranties do not apply to any products which have been repaired or altered in any way so as to impair performance or reliability, nor to products which have been subject to misuse, abuse, neglect or accident or which have been damaged in transit. Gibo/Kodama Chairs will not be liable, under any circumstances, for incidental or consequential damages (including, without limitation, lost profits) arising in connection with the sale, use, inability to use, repair, or replacement of Gibo/Kodama Chair products other than that portion of the repair or replacement outlined in this warranty.

This warranty is effective only if the customer gives prompt written notice to factory of any alleged defect. The notice shall describe the problem and shall include the model and serial number shown on the tag located on the control mechanism. Information may be emailed to info@gkchairs.com or faxed to (714) 897-7201. Contact us at (800) 888-3746 or (714) 373-2346 with any questions.

This warranty stated herein is in lieu of all other warranties expressed or implied.

06/01/2015

For more information and additional options, call (888) 903-0333 or visit www.gotopac.com

HOW TO SPECIFY CHAIR PART NUMBERS

Col 1 & 2 & 3 & 6 - Cols 4 & 5 - Col 7 - Col 8 - Col 9 - Col 10 - Col 11 - (Col 12-Col 13-Col 14) - Finish

Ex.
ORIG.

CE380AT - AB - V902 - R20 - A28P - 07B - TE - P

CE3300AT-V902-07B POL

Column 1: Chair Type

- T** Production No Environment
- C** Cleanroom Environment
- CE** Cleanroom ESD Environment
- ACE** Cleanroom Class 10 ESD Env
- E** ESD Environment
- H** Harsh Environment
- M** Medical Healthcare
- OT** Office Environment
- FB** Fire Retardant Barrier
- X** Special Application

Column 2: Chair Model

- 1** Stool
- 3** Stamina
- 4** Synchron
- 6** Ratchet Back Task
- 7** Stamina Saddle
- 8** ACE Cleanrm Class 10/ESD
- 9** Harsh Environment
- 21** Healthcare Stool
- 22** Healthcare Chair
- CA** Catalina Elite
- CR** Coronado Elite
- HU** Huntington Elite
- IN** Intrepid Intensive Use
- LG** Laguna Mesh Back
- P** Polyurethane Seat/Back
- RE** Respon Executive
- AL** Alpha
- ZE** Zeta Mesh Back

Column 3: Chair Cylinder

- 35** 3.5" Stroke Cylinder
- 40** 4" Stroke Cylinder
- 45** 4.5" Stroke Cylinder
- 50** 5" Stroke Cylinder
- 51** 5" H.D. Cylinder
- 52** 5" High Taper Cylinder
- 65** 6.5" Stroke Cylinder
- 80** 8" Stroke Cylinder
- 81** 8" Stroke H.D. Cylinder
- 90** 10" Stroke Cylinder
- 91** 10" Stroke H.D. Cylinder

Column 4: Chair Seat

- A** Stamina Contour
- B** Stamina Waterfall
- C** Stamina Contour Short
- D** Stamina Waterfall Short
- E** Stamina Saddle
- F** Stamina Saddle Short
- G** Synchron
- H** Huntington
- J** Catalina
- K** Coronado
- L** Alpha
- M** Small 20"x17" Saddle
- N** Intrepid
- O** Round
- P** Polyurethane Tulip
- Q** Oval
- R** Air Exchange
- S** Synchron Short
- T** Réspn 22" wide x 20" deep
- U** Zeta

Column 5: Chair Back

- A** Stamina Standard
- B** Stamina Mid High
- C** Stamina Extra High
- D** Ratchet Mid Back

Column 5: Chair Back (cont'd)

- E** Synchron
- F** Catalina
- G** Coronado
- H** Huntington
- J** Respon
- K** Medical Chair Back
- L** Intrepid
- M** Laguna Mesh
- MZ** Zeta Mesh Back
- O** No Back
- P** Polyurethane Tulip
- Q** Air Exchange
- T** T-Back
- WP** Alpha Hi Back w/Plastic Shroud
- WU** Alpha Hi Back, Fully Uphols.
- VP** Alpha Lo Back w/Plastic Shroud
- VU** Alpha Lo Back, Fully Uphols.
- Z** X-High Narrow Back

Column 6: Chair Control

- AT** AutonomousTilt
- AH** Autonomous Tilt HE
- BT** BackTilt
- BH** Back Tilt HE
- BC** SynchroTilt w/o Slide
- BCS** SynchroTilt w/Slide
- CR** Catalina Standard
- CV** Catalina Ratcheting
- FT** ForwardTilt
- IJ** IndependenTiltJBar
- IT** IndependentTilt
- PL** PneumaticLift
- RT** RockingTilt
- SI** IndependentTilt/Sliding Seat
- SS** Sit Stand Tilt
- ST** SynchronousTilt
- HR** Huntington
- SR** RockingTilt/Sliding

Column 7: Chair Upholstery

- F0xx** Staccato Fabric
- F1xx** Grade 1 Fabric
- F3xx** Ofc Grade Fabric
- F8xx** ESD Fabric
- V5xx** Grade 1 Vinyl
- V90x** ESD Vinyl

Column 8: Chair Footring

- NR** No Footring
- R18** 18" dia adj footring
- RN18** 18" dia adj nylon footring
- R20** 20" adj alum footring

Column 9: Chair Base

- A20P** 20" five leg alum Base POL
- A23P** 23" five leg alum Base POL
- A25P** 25" five leg alum Base POL
- A25B** 25" five leg alum Base Blk
- A27P** 27" five leg alum Base, HP, POL
- A28B** 28" five leg alum Base Blk
- A28P** 28" five leg alum Base POL
- A28H** 28"HD five leg alum Base
- N20** 20" five leg Nylon Base
- N22** 22" five leg Nylon Base
- N25** 25" five leg Nylon Base
- N27G** 27" five leg Nylon Base Ofc-Gls
- N27M** 27" five leg Nylon Base, HP
- N27V** 27" five leg Nylon Base Office
- N28** 28" five leg Nylon Base Spider
- T18** 18" Trumpet Base

Column 10: Chair Casters

- Non-ESD**
- 01** 2" Chr Hard whl Non-ESD
 - B01B** 2" Blk Hard whl Non-ESD Brake
 - 02** 2"Blk Hard whl Non-ESD
 - 02B** 2"Blk Hard whl Non-ESD Brake
 - 03** 2" Sgl Whl Non-ESD
 - 09** 2" Chr Soft whl Non-ESD
 - 09B** 2" Chr Soft whl Non-ESD Brake
 - 09RB** 2" Chr Soft whl Non-ESD RBrk
 - 10** 2" Blk Soft whl Non-ESD
 - 10B** 2" Blk Soft whl Non-ESD Brake
 - 10RB** 2" Blk Soft whl Non-ESD RBrk
 - 12** 2" Detach Whl Non-ESD
 - 60U** 60mm Soft Dual Wheel
 - G1** Non-ESD Glide
 - G4** Non-ESD Glide
 - G5** Non-ESD Donut Glide

ESD:

- 04** 2" Sgl Whl ESD
- 06** 2" Chr Soft whl ESD
- 06B** 2" Chr Soft whl ESD Brake
- 06RB** 2" Chr Soft whl ESD RBrake
- B06** 2" Blk Hd soft Dual, ESD
- B06B** 2" Blk Hd soft Dual, ESD Brake
- 07** 2" Die Cast Stl ESD
- 07B** 2" Die Cast Stl ESD Brake
- 26** 3" Soft Dual Whl ESD
- G3** ESD Glide

With Stainless Steel Stems:

- 02S** 2"Blk Hard whl Non-ESD, SS Stems
- 02BS** 2"Blk Hard whl Non-ESD Brake, SS
- 10S** 2" Blk Soft whl Non-ESD, SS
- 10BS** 2" Blk Soft whl Non-ESD Brake, SS
- 12S** 2" Detach Whl Non-ESD, SS
- G5S** Non-ESD Donut Glide, SS

Column 11: Chair Arms

- A1PH** Slanted Arm, Horiz Poly Pad
- A1HEV** Slanted Arm, ESD Vinyl Uph Hz Pad
- MPD** 360 RotArm, Del Mar Poly Pad
- MLF** M w/Lg Fabric Uph Pad
- MLV** M w/Lg Vinyl Uph Pad
- MSF** M w/Sht Fabric Uph Pad
- MSV** M w/Sht Vinyl Uph Pad
- RPD** Rot. Trig Arm, Del Mar Poly Pad
- RFO** Rot. Trig Arm, Fabric Uph Pad
- RVO** Rot. Trig Arm, Vinyl Uph Pad
- TE** ESD Trigger Arm
- TEV** ESD Trigger Arm, Vinyl Uph
- TPD** Trig Arm, Del Mar Poly Pad
- TP39** Trig Arm, 3x9 Poly Pad
- TF** Trig Arm, Fabric Uph Pad
- TV** Trig Arm, Vinyl Uph Pad
- TFO** Trig Arm, Fabric Uph Pad, Ofc
- TPDP** TPD w/Bracket for PolySeat

Column 12 & 13: Chair Options

Column 14: Chair SP Options

- Finish**
- P** Polished Aluminum
 - B** Black Powder Coated Aluminum
 - BN** Black Nylon