

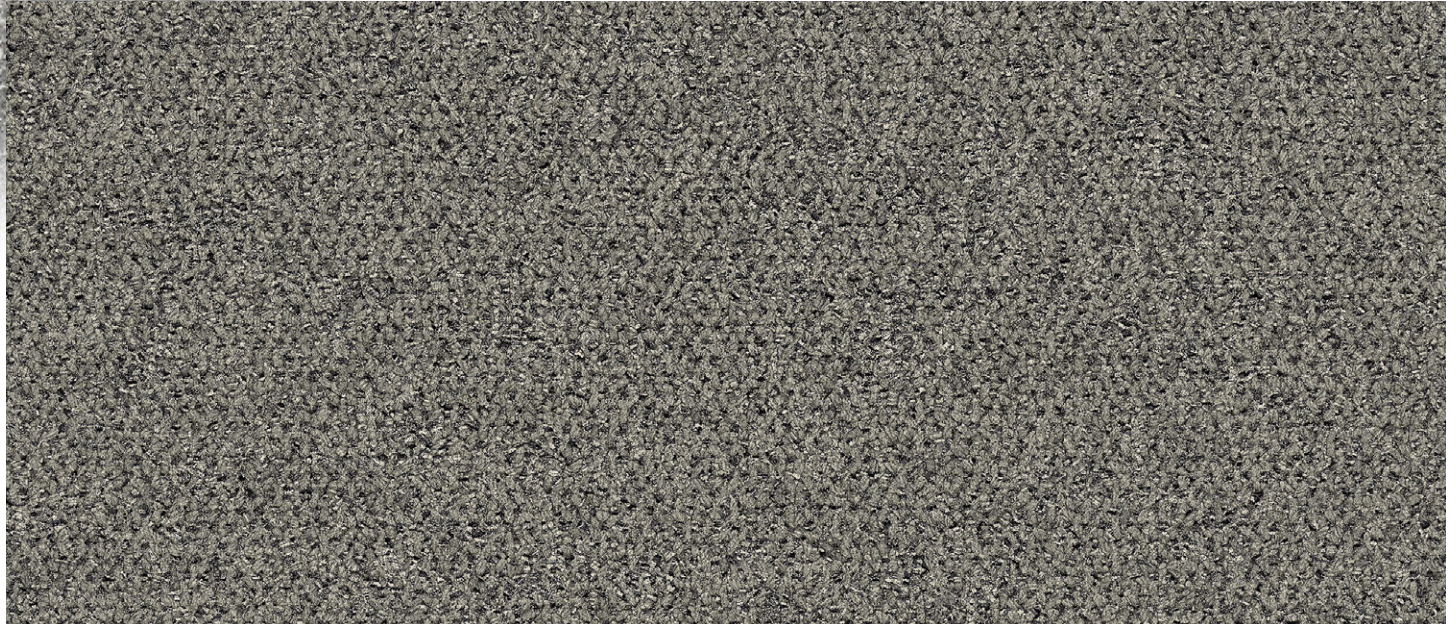


SHADOWFX™ SDC

VERMONT SLATE COLLECTION

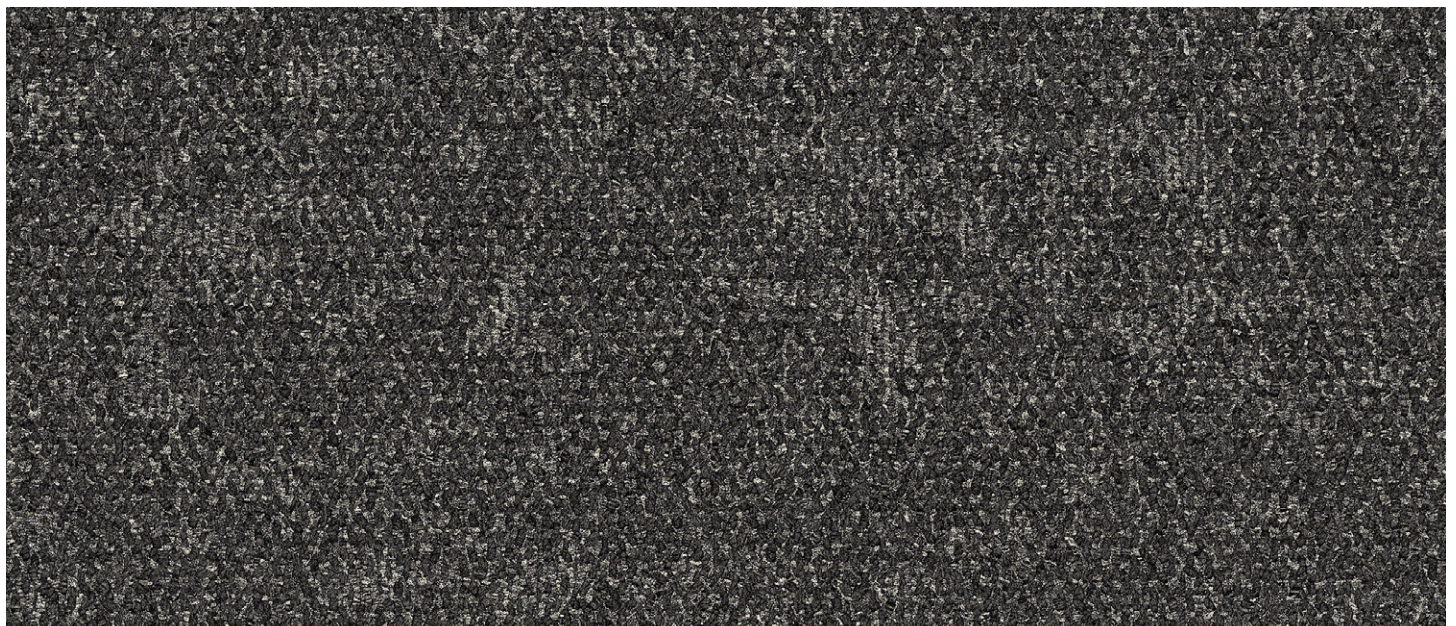
Meets ANSI/ESD S20.20-2014, EN61340-5-1, ATIS 0600321.2015, FAA 019f, Motorola R56, MIL-STD-1686 — for any static control flooring application.

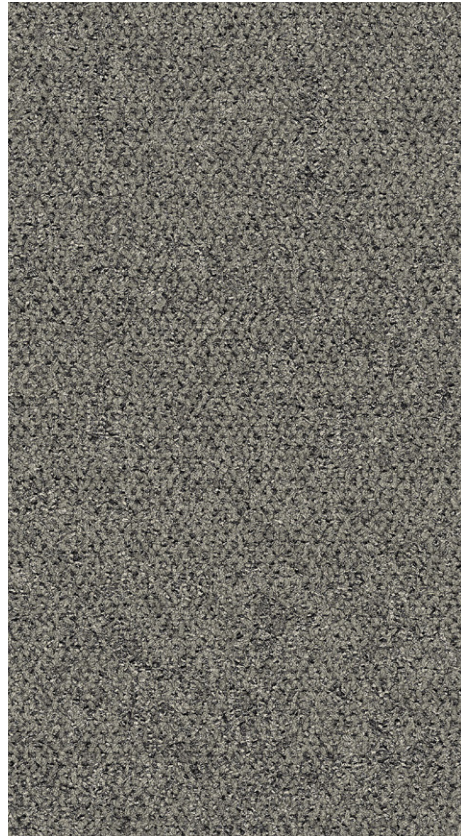
**SHADOWFX SDC — CONSTRUCTED OF PREMIUM BRANDED YARN
FOR DEMANDING ESD APPLICATIONS AND 24/7 ENVIRONMENTS**



△ 3-50 Vermont Gray Slate 19.6" 24"

▽ 3-51 Hoosic Riverbed 19.6" 24"





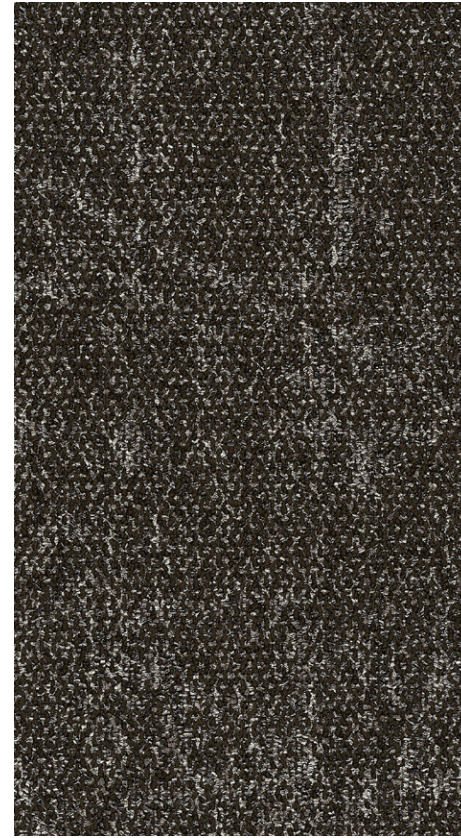
3-50 Vermont Gray Slate



3-51 Hoosic Riverbed



3-52 Vermont Black Bear



3-53 Red Pine Bark



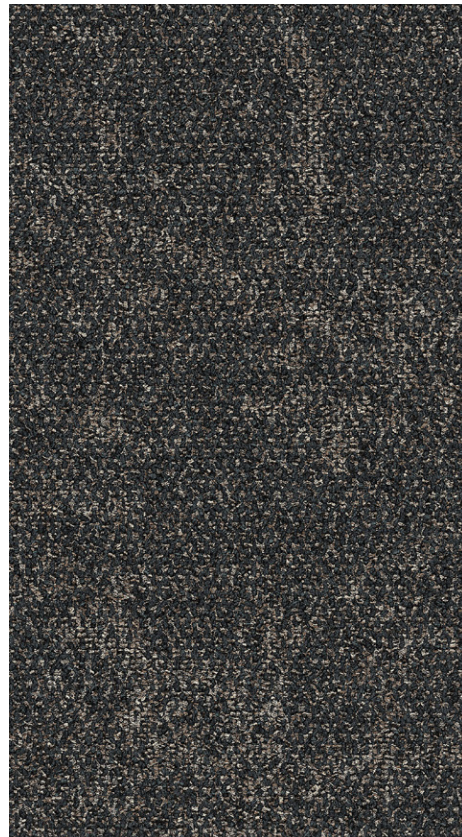
3-54 Cedar Wood



3-55 Northern Hardwoods



3-56 Black Maple



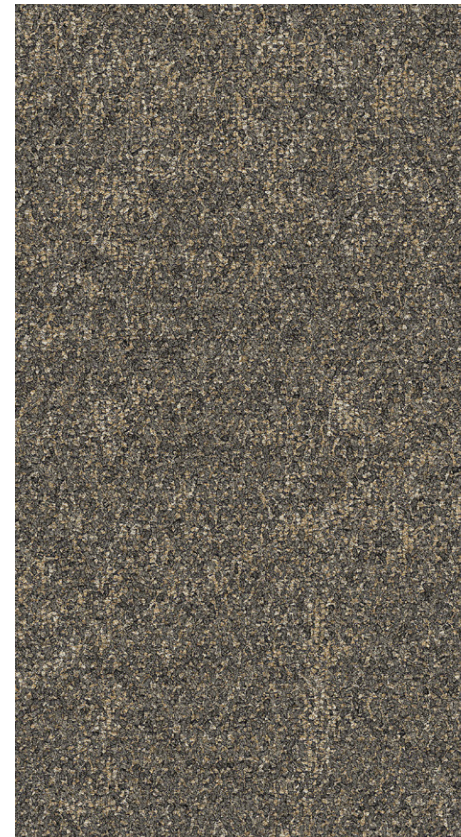
3-57 Otter Creekbed



3-58 White Riverbed



3-59 Champlain Shoreline



3-60 Caspian Shoreline



3-61 Willoughby Shoreline

SHADOWFX™ SDC VERMONT SLATE COLLECTION

static-free floors inspired by nature

Simplicity in a Complex World

Staticworx Vermont Slate carpet-tile collection combines the high performance and durability you expect from Staticworx floors in a design that transports you to the rocky hills of Vermont. Warm, monochromatic earth tones create a more peaceful environment, bringing simplicity to a complex world, inspiring creativity, and encouraging a sense of wellbeing and connectedness.

PASSING THE TEST

- Mergeable design** - eliminates worry about matching dye lots
- No fade** - solution-dyed year prevents fading
- Monolithic design** - easy to install and replace
- Durable** - rated for high traffic
- Superior static control** - meets the most stringent ESD standards*
- Static dissipative** - meets standards for telecom and government spaces*

SPECIFICATIONS

Construction: Tufted textured loop

Yarn Weight: 17 oz/yd² (576 g/m²)

Fiber Modification Ratio: 1.7 to 1.9

Sizes: 19.69" x 19.69", available in 24" x 24", PosiTile-compatible with Tate Access Floors

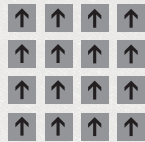
Traffic Classification: Heavy

MEETS THE FOLLOWING STANDARDS:

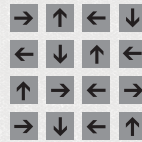
- ANSI/ESD S20.20**, for electronics manufacturing and handling
- Motorola R56**, for 9-1-1 dispatch facilities
- ATIS-0600321.2015**, for telecom applications
- FAA 019f**, for flight control applications
- NFPA 99**, for use in healthcare facilities
- Army Corps of Engineers UFGS 09 62 38**, for static-control in government facilities

Choose your tile pattern and enjoy worry-free tile replacement

The rock-like etchings in our Vermont Slate carpet tiles flow seamlessly across the surface of the floor in a non-directional or monolithic installation. And the mergeable design allows you to replace tiles without worrying about dye lots or affecting the overall appearance of the floor.



Monolithic Installation



Non-directional Installation

"Your product rocks and I'm so glad we were able to find an attractive solution that didn't leave us with some run-of-the-mill ugly disaster in the middle of our workspaces. You would never know it was ESD, WHICH IS AMAZING!"

Sydney Young, Associate IIDA, Interior Designer, FFKR Architects



Monolithic installation



GroundBridge strips (shown in white). Inset: TacTiles square being applied to corner of carpet tile.

ShadowFX Floating Floors

FAST, GLUELESS, ODORLESS INSTALLATIONS – AN IDEAL OPTION FOR OCCUPIED WORKSPACES

Roll out GroundBridge™ strips, a lightweight material of conductive cellulose. Create a floating floor by joining the corners of ShadowFX carpet tiles using dimensionally-strong, self-adhering TacTiles®. Done.

- Virtually eliminates VOCs — no need to shuffle employees to different work areas or endure downtime and disruptions.
- Desk-lifting equipment permits quicker installations without removing existing furniture.
- No buckets of glue, no mess — easy, fast, clean installations & tile replacement.

