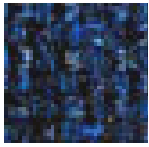


Upholstery Colors & Options for Industrial Seating Series 65 Stools

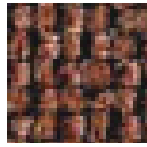
Standard Fabric:



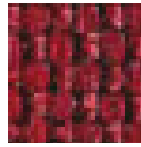
Black



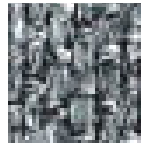
Blue



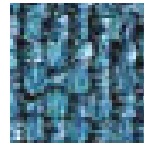
Brown



Burgundy



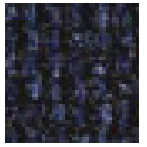
Grey



Light Blue

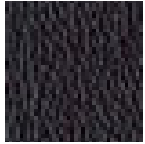


Light Grey

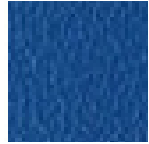


Navy

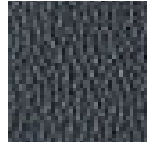
Standard Vinyl:



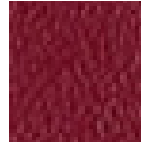
Black



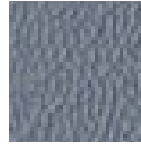
Light Blue



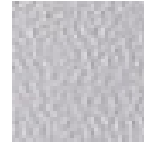
Charcoal



Burgundy



Grey



Light Grey



Navy

Conductive Fabric:

Black
Grey
Light Blue
Light Burgundy
Navy
Charcoal

Dissipative Vinyl:

Black
Blue
Burgundy

Caster Options:

1B Standard Braking Nylon Casters
1UB Standard Breaking Urethane Casters
1U Standard Urethane Casters
9 Dual Wheel Nylon ESD Casters
9B Dual Wheel Braking Casters
9U Dual Wheel Urethane Casters
9UB Dual Wheel Braking Urethane ESD Casters
G2 Glides
G11 ESD Glides

Base Options:



Polished
Aluminum



Nylon

Control, Back, Armrest & Footring Options:



- Medium Height Cylinder
- Adjustable Footring (Bench Height)